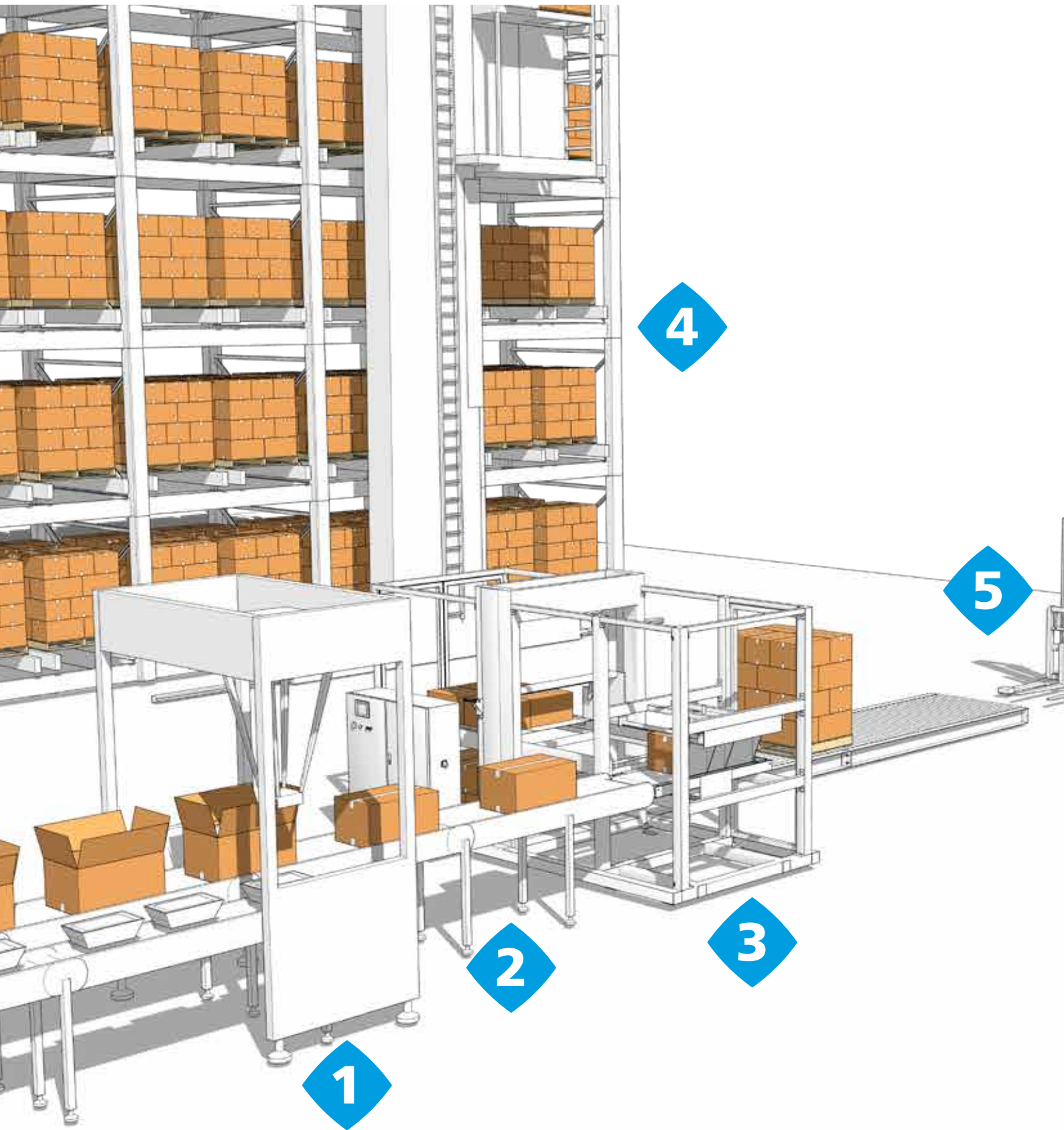


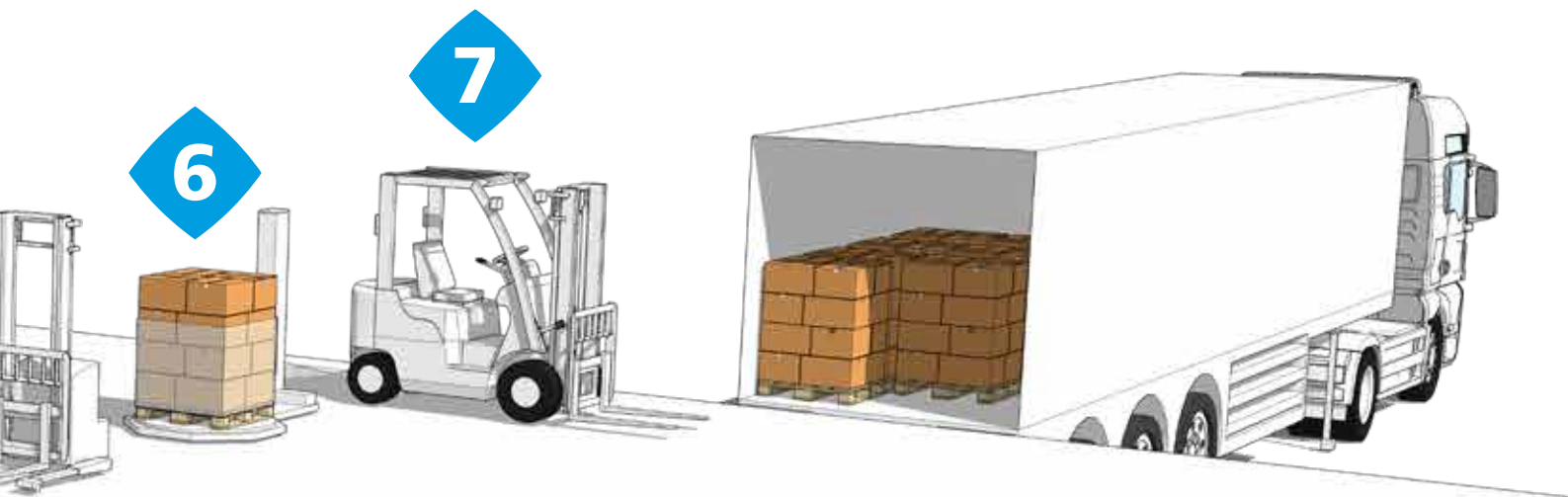
## Solutions for Intralogistics



APPLICATIONS



# WE HAVE THE RIGHT SOLUTIONS FOR ALL YOUR INTRALOGISTICS NEEDS



**1** CARTON PACKER

**2** BELT CONVEYOR

**3** PALLETIZING

**4** AUTOMATIC STORAGE

**5** WAREHOUSE TRUCK

**6** WRAPPING

**7** COUNTERBALANCE FORKLIFT

1

## CARTON PACKER

### Active Cube

Premium inverters

#### BENEFITS

- Interpolated operating mode
- Smooth start
- Torque control

#### FEATURES

- Ethernet based drive
- Wide power range and parallel connection option to reach up to 1200 kW
- Integrated torque off safety function, external 24 Vdc control power supply
- Tropicalization option
- Integrated PLC function with graphic development environment



### TQ+BMD Series

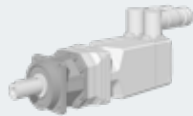
Servo gear units

#### BENEFITS

- High precision and dynamic
- Highly compact
- High stiffness
- Designed for continuous and intermittent duty

#### FEATURES

- Different feedback systems available
- Brake option
- Inertia flywheel
- Customized windings on request



### A+BMD Series

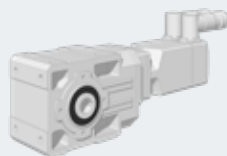
Servo gear units

#### BENEFITS

- Compact
- Universal mounting
- Modular design

#### FEATURES

- Keyed hollow shaft (metric and inch series)
- Super premium efficiency motors (IE4)
- Wide range of feedback devices
- Brake option
- Inertia flywheel
- Customized windings on request



2

## BELT CONVEYOR

### A Series

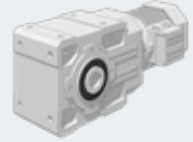
Bevel-helical gearmotors

#### BENEFITS

- Compact
- Universal mounting
- Modular design

#### FEATURES

- Keyed hollow shaft (metric and inch series)
- High and premium efficiency motors (IE2, IE3)
- Wide range of feedback devices (incremental and absolute encoders)



### C Series

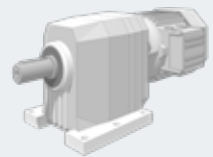
Helical gearmotors

#### BENEFITS

- Top torque density
- Highly compact
- Wide speed choice

#### FEATURES

- Wide choice of output bolt-on-flanges
- Special seals set for severe environment applications
- Surface protection class C3, C4 and C5 (according to UNI EN ISO 12944-2 standard)



### VF-W Series

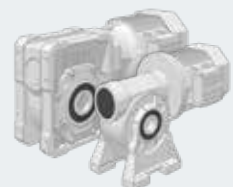
Worm gearmotors

#### BENEFITS

- Cost effective
- Uncompromising quality
- Specially designed for food & beverage industries

#### FEATURES

- High and premium efficiency motors (IE2, IE3)



3

PALLETIZING

**Active Cube**  
Premium inverters



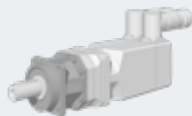
**BENEFITS**

- Interpolated operating mode
- Smooth start
- Torque control

**FEATURES**

- Ethernet based drive
- Wide power range and parallel connection option to reach up to 1200 kW
- Integrated torque off safety function, external 24 Vdc control power supply
- Tropicalization option
- Integrated PLC function with graphic development environment

**TQ+BMD Series**  
Servo gear units



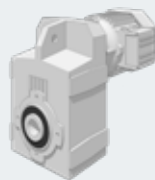
**BENEFITS**

- High precision and dynamic
- Highly compact
- High stiffness
- Designed for continuous and intermittent duty

**FEATURES**

- Different feedback systems available
- Brake option
- Inertia flywheel
- Customized windings on request

**F Series**  
Helical gearmotors



**BENEFITS**

- Easy installation
- Low noise
- High torque capability

**FEATURES**

- Keyed Hollow Shaft - Two Bore Options per Size, Keyless Shrink Disc Fitting (Metric series)
- Keyed Hollow Shaft (Inch series)
- Back stops device
- High and premium efficiency motors (IE2, IE3)

4

AUTOMATIC STORAGE

**Active Cube**  
Premium inverters



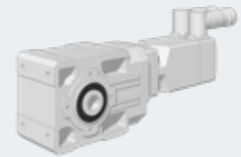
**BENEFITS**

- Interpolated operating mode
- Smooth start
- Torque control

**FEATURES**

- Ethernet based drive
- Wide power range and parallel connection option to reach up to 1200 kW
- Integrated torque off safety function, external 24 Vdc control power supply
- Tropicalization option
- Integrated PLC function with graphic development environment

**A+BMD Series**  
Servo gear units



**BENEFITS**

- Compact
- Universal mounting
- Modular design

**FEATURES**

- Keyed hollow shaft (metric and inch series)
- Super premium efficiency motors (IE4)
- Wide range of feedback devices
- Brake option
- Inertia flywheel
- Customized windings on request

5

WAREHOUSE TRUCK

**EL Series**  
Electric Wheel drives



**STANDARD FEATURES & BENEFITS**

- High maneuverability
- Two-stage helical & bevel gearboxes
- Manual steer and power steer versions
- Optimized gear design for efficiency and noise
- Integrated low voltage electric motor and parking brake
- Complete system with tyres

**OPTIONAL FEATURES AVAILABLE ON REQUEST**

- Cold environment versions
- Integrated tiller or castor wheel supports

## 6 WRAPPING

### Agile

Standard inverters



#### BENEFITS

- Smooth start
- Feed roll control
- Low energy consumption

#### FEATURES

- Sensor-less vector control for asynchronous and synchronous motors
- Integrated torque off safety function
- Integrated Modbus
- Optional communication card (Profibus, CanOpen...)

### VF-W Series

Worm gearmotors



#### BENEFITS

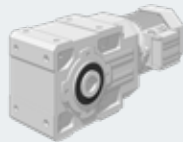
- Cost effective
- Uncompromising quality
- Specially designed for food & beverage industries

#### FEATURES

- High and premium efficiency motors (IE2, IE3)

### A Series

Bevel-helical gearmotors



#### BENEFITS

- Compact
- Universal mounting
- Modular design

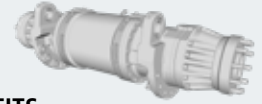
#### FEATURES

- Keyed hollow shaft (metric and inch series)
- High and premium efficiency motors (IE2, IE3)
- Wide range of feedback devices (incremental and absolute encoders)

## 7 COUNTERBALANCE FORKLIFT

### 600F Series

Electric powertrains



#### STANDARD FEATURES & BENEFITS

- Dual planetary gearbox
- Optimised gear design for maximum efficiency and minimum noise
- Wet disc service brake with low displacement actuation
- Parking brake with mechanical lever actuation
- Integrated, customised mast support
- Integrated AC traction motor in IP20 or IP43 protection ratings
- Integrated, high accuracy, silicon based KTY temperature sensor
- Integrated, high resolution hall effect speed sensor

#### OPTIONAL FEATURES AVAILABLE ON REQUEST

- Spring-applied hydraulic release parking brake
- Mechanical disengagement for towing, with no need to remove the wheel and without oil drop

### 600W0C Series

Idle steering System



#### STANDARD FEATURES

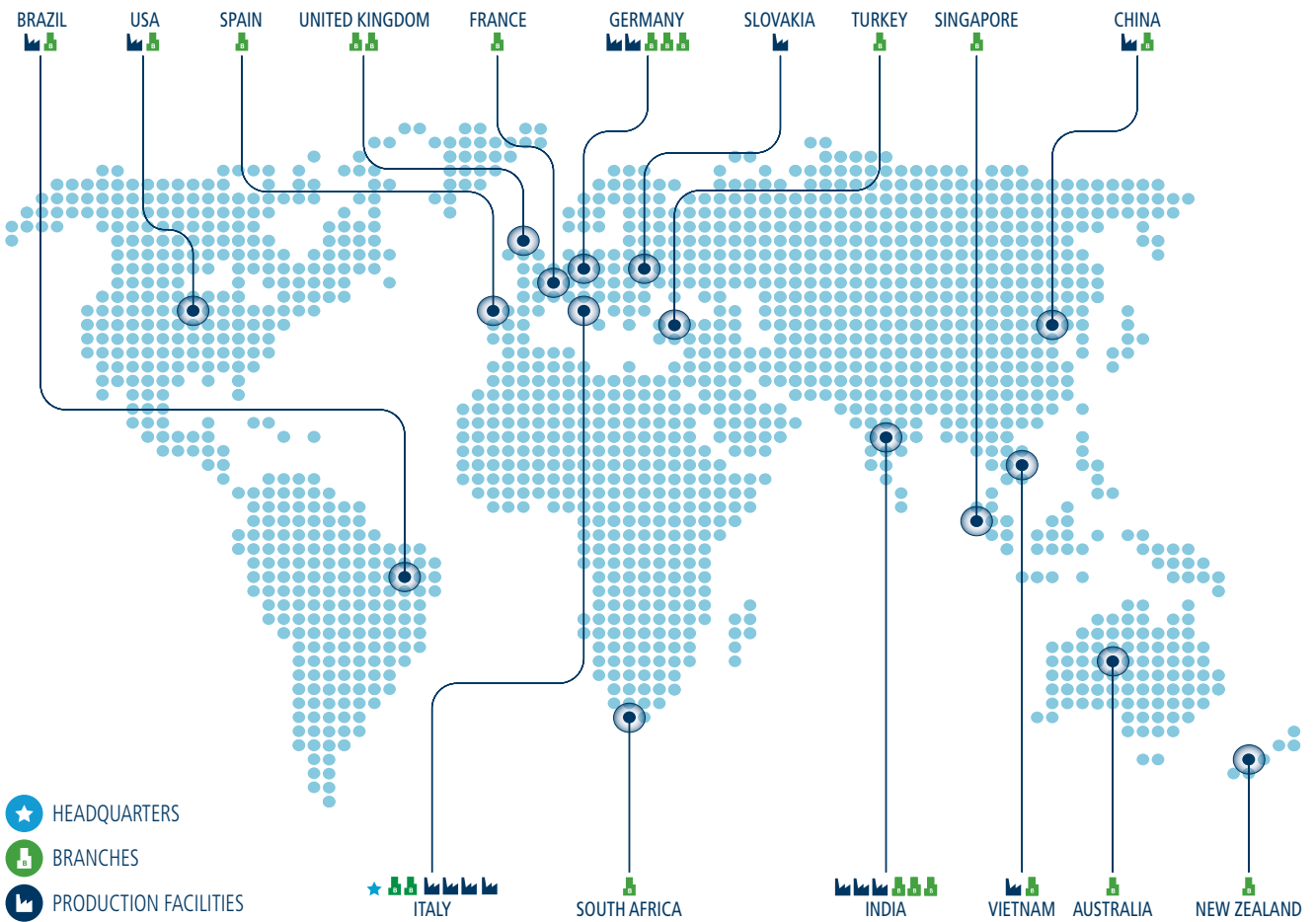
- Hydraulic steering
- Optimised design for steering angle

#### OPTIONAL FEATURES AVAILABLE ON REQUEST

- Anti-vibration parts
- Potentiometer for steering angle

# BONFIGLIOLI WORLDWIDE PRESENCE

Bonfiglioli is located in regions and countries around the world that enable us to provide faster sales and service to customers.  
**We are around the world, and around the corner.**



**LOCAL SUPPORT**  
 Sales, Customer Service,  
 Warranty, Tech support,  
 Spare parts



**21 BRANCH OFFICES  
 IN 15 COUNTRIES**



**WORLDWIDE  
 DISTRIBUTION  
 NETWORK**



We have a relentless commitment to excellence, innovation and sustainability. Our team creates, distributes and services world-class power transmission and drive solutions to keep the world in motion.



#### **HEADQUARTERS**

**Bonfiglioli Riduttori S.p.A.**  
Via Giovanni XXIII, 7/A  
40012 Lippo di Calderara di Reno  
Bologna (Italy)  
tel: +39 051 647 3111  
fax: +39 051 647 3126  
[bonfiglioli@bonfiglioli.com](mailto:bonfiglioli@bonfiglioli.com)  
[www.bonfiglioli.com](http://www.bonfiglioli.com)